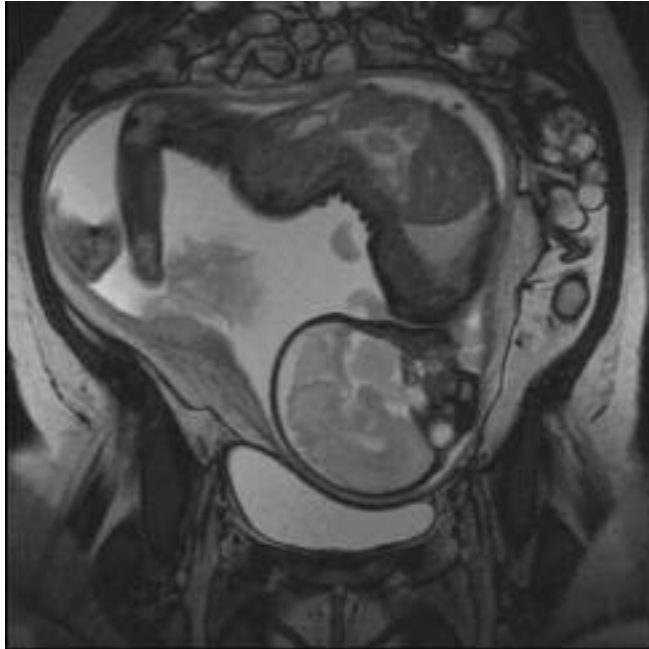


Quiz

A 26-year-old primigravida was observed during her routine antenatal visit at 32 weeks of gestation. At her obstetric ultrasound examination persistent hyperextension of the fetal head and vertebral column was noticed. Except a nuchal cord, no fetal abnormality was observed at ultrasonography. MRI showed the finding below.

What is your diagnosis?



Please see page 264 for the answers